

A U D I O
D A T A
L A B



Design and Construction of advanced mix rooms and home theaters

Audio Data Lab has over 25 years of experience of recording studio and control-room design. Our clients range from musicians and producers to government agencies and television networks. Most of Sweden's professional recording and post-production facilities have been acoustically designed or optimized by us.

Regardless if you need a new recording facility or if you need to upgrade your control-rooms to 5.1 surround capabilities we can help you design a perfect studio. We have improved the acoustics of small rehearsal rooms, designed international recording facilities and redesigned old recording-studios to keep them up to date with the racing technical evolution.

In order to live up to the high demands of our clients we have established a network of skilled consultants and contractors, known to deliver high quality results on time. For clients with special aesthetic demands we can provide access to interior designers and building architects that we know fully to understand the delicacies of recording-studio construction and design.

Audio Data Lab

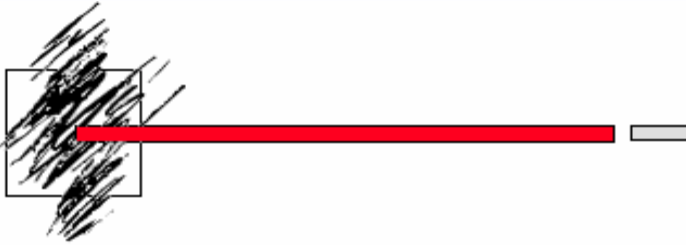
Katarinavägen 22

SE-116 45 Stockholm

SWEDEN

Phone +46-(0)8-644 58 65 or +46-(0)70-644 58 69 FAX +46-(0)8-641 67 91

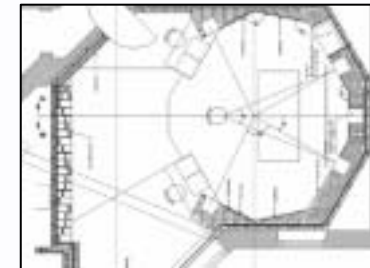
www.audiolab.se Email adl@audiolab.se



Design of rooms for Musik, TV & Radio, Postproduction pm3

Design development phase

- Sound measurement test
- Computer simulations
- Working drawings (CAD)



Construction phase

- Sound measurement test
- Revision of possible changes



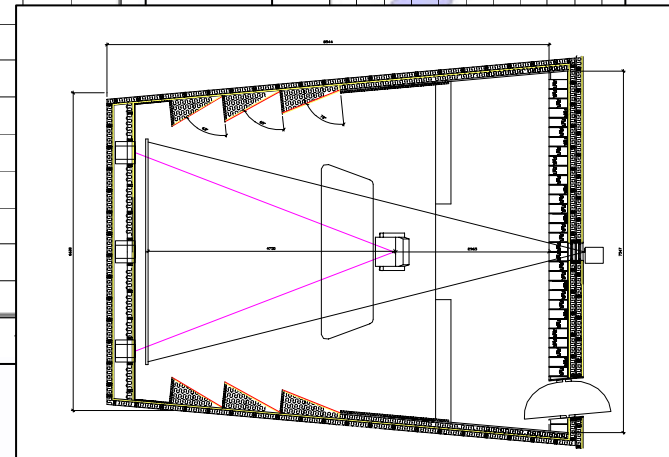
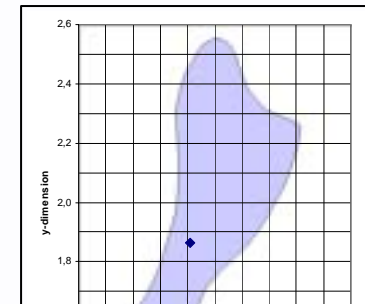
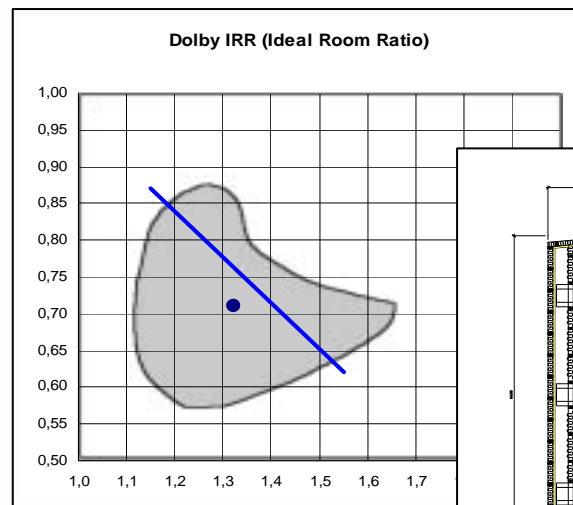
Sound Check Phase

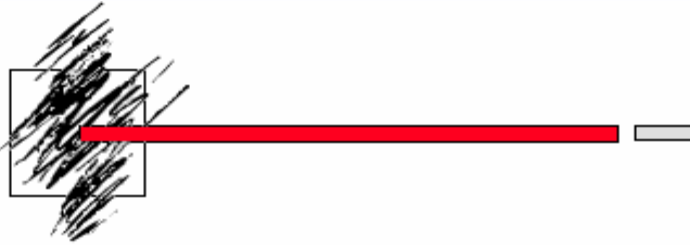
- Sound measurement test
- Optimizing loudspeakers



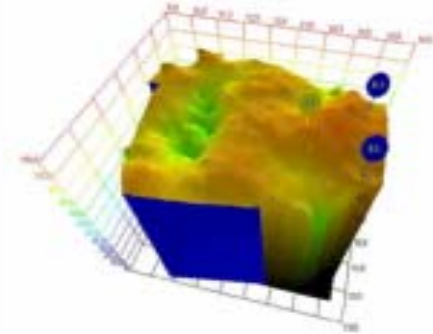
Design of Postproduction pm3 Rooms

The room dimensions are checked and adjusted for optimal results.

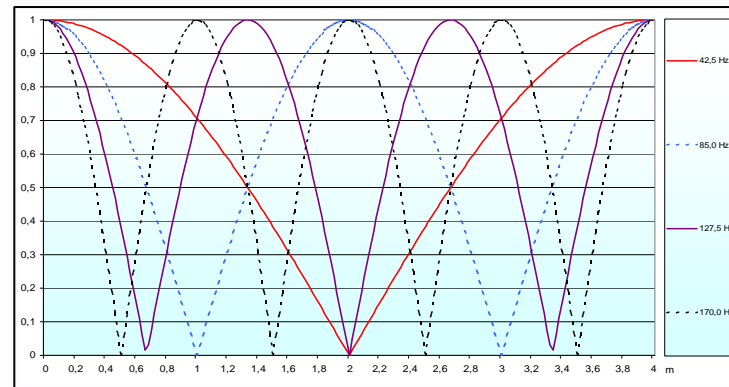
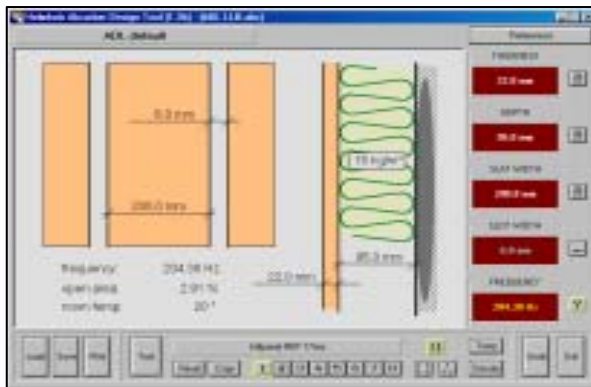


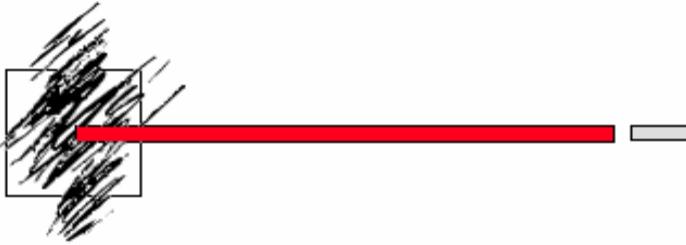


Design of Rooms

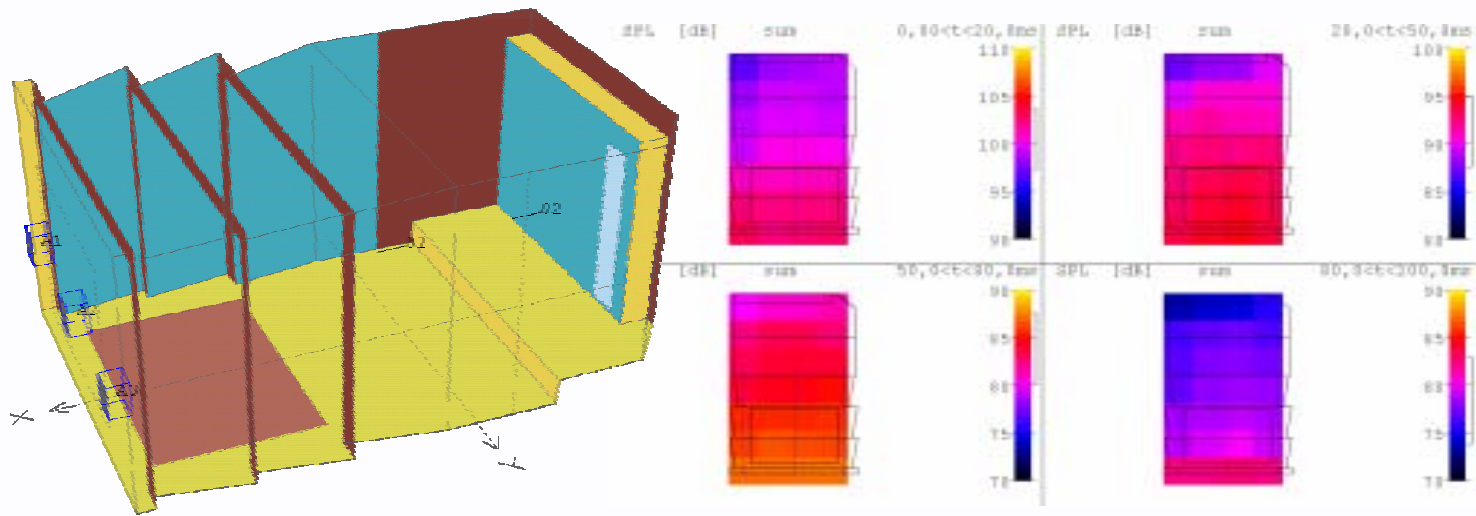


We put a lot of effort to make sure, that the acoustics in the rooms we design are optimal at low frequency

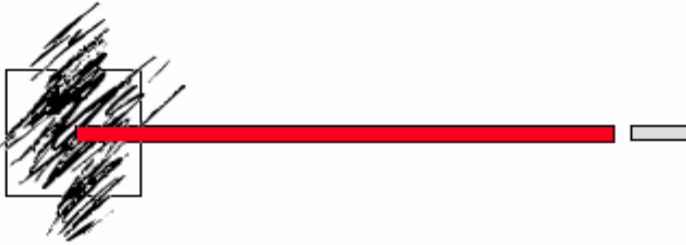




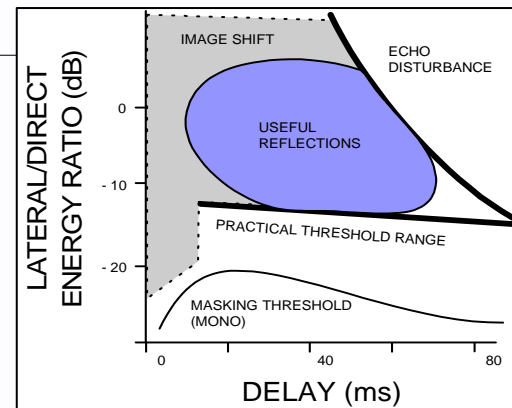
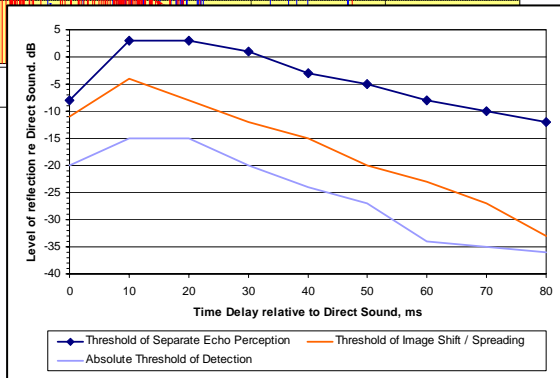
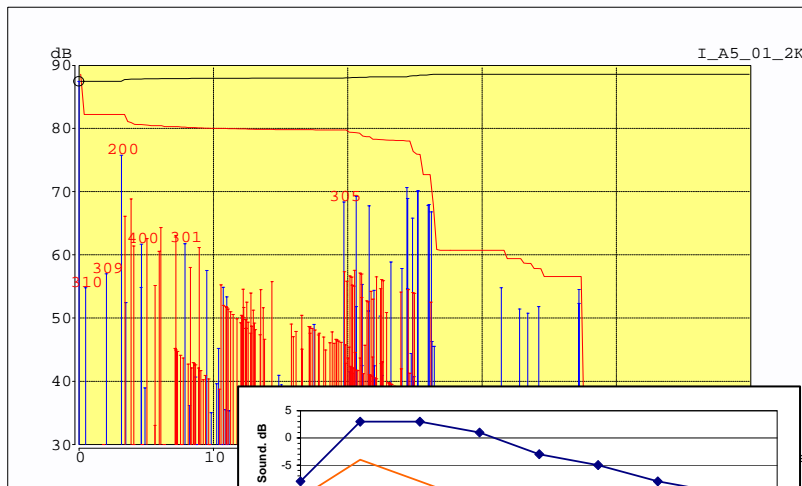
Design of Rooms - Computer simulations



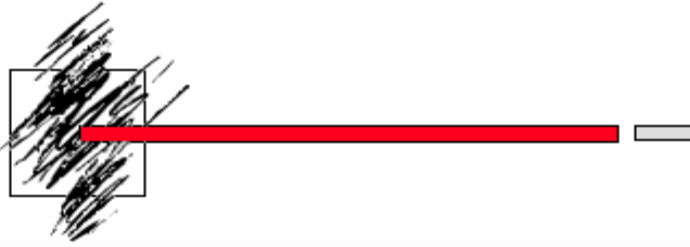
Computer generated models are used for calculation in order to receive the best possible room dimensions, acoustical material and placement of loudspeakers.



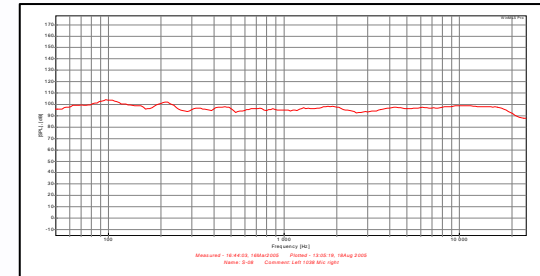
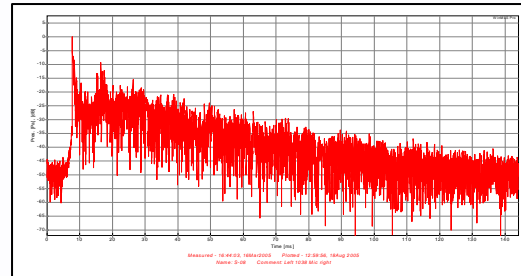
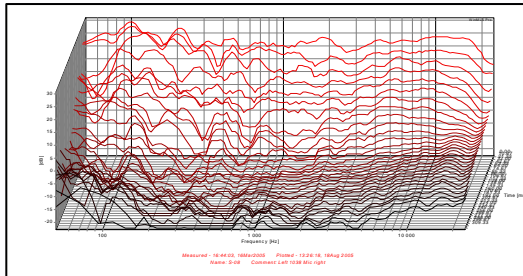
Design of Rooms - Computer simulations



Computer generated calculations are used to minimize sound reflections under 80 ms.



Design of Rooms - After construction check



After the construction phase the loudspeakers are adjusted for optimal frequency response

A
U
D
I
O
D
A
T
A
L
A
B



A
U
D
I
O

D
A
T
A

L
A
B

